



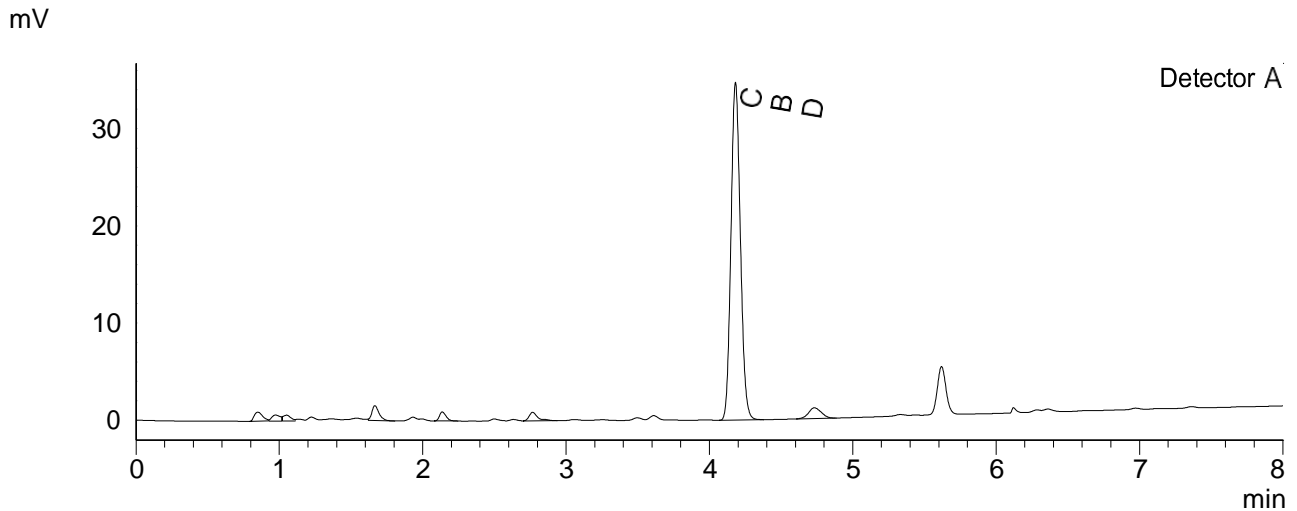
Certificate of Analysis

Sample provided to the laboratory by the client and tested as received

Likku, LLC

Spokane Valley, WA 99206

Chromatogram



Quantitative Results

Detector A

Compound Name	Concentration, %
CBDV	--
CBDA	--
CBGA	--
CBG	--
CBD	1.345
THCV	--
CBN	--
THC	--
CBC	--
THCA-A	--
CBL	--
CBDVA	--
CBDB	--

Sample information

Sample name: BFS-31
Analysis date: 2022 05 30

Summary

Total THC	0.00	%
Total THC	0.00	mg/g
Total CBD	1.34	%
Total CBD	13.45	mg/g

-- compound below LOQ or not detected; LOQ < 0.001%
THC content does not exceed legal limits.

Instrumental and analytical conditions.

Sample preparation: 0.01 g (± 0.00001) of homogenous sample was diluted with 1 mL of HPLC grade methanol. Diluted sample was mixed, vortexed and centrifuged. Then the mixture was diluted again to a final concentration of 0.1 mg/mL. Peak identification and quantification was performed by comparing retention times and UV absorption spectra of the samples with those of the standard solutions.

Equipment: Quantitative analysis was performed using Shimadzu Cannabis Analyzer for Potency - an integrated HPLC system with built-in sample cooler, degasser, autoinjector and UV detector. NexLeaf CBX for potency, 2.7 μ m, 4.6 x 150 mm column coupled with NexLeaf Guard column. Data was analyzed using Shimadzu LabSolutions software.